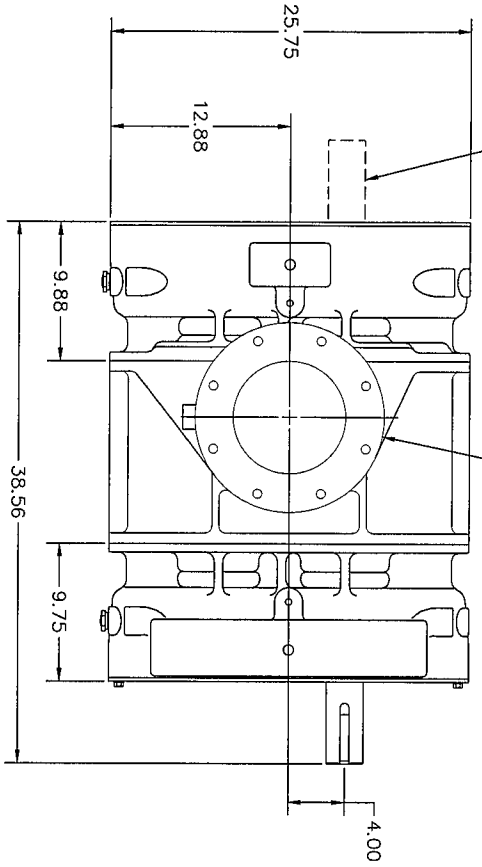
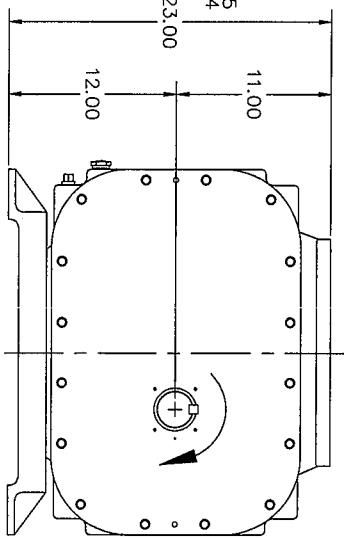
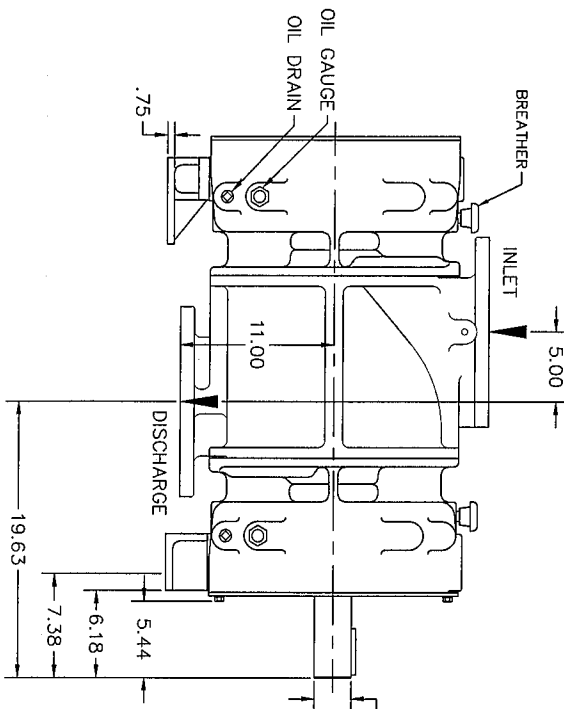
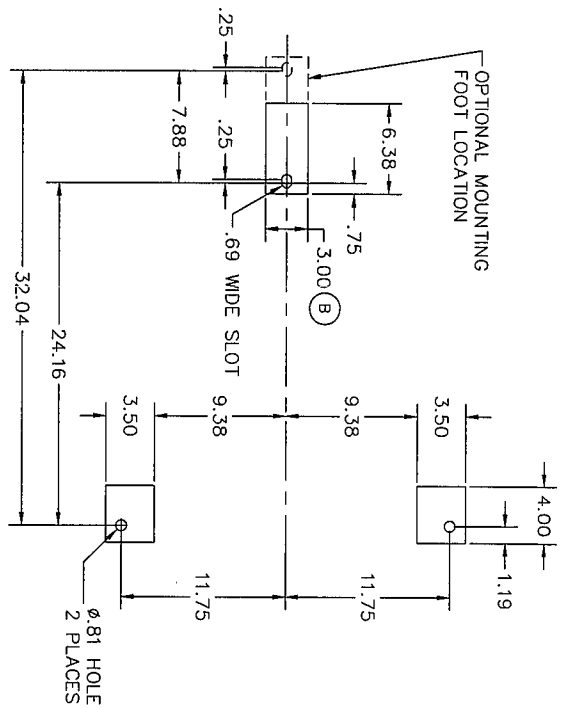


SHAFT EXTENSION MAY BE EITHER OR BOTH ENDS PER CUSTOMER REQUEST

8.00 FLANGE Ø13.50
8 HOLES 3/4"-10 UNC TAP (B)
Ø11.75 B.C. - BOTH PORTS



OPTIONAL MOUNTING FOOT LOCATION



WEIGHT: 1475 LBS

CONFIDENTIAL - THE INFORMATION CONTAINED IN THIS DOCUMENT IS THE PROPERTY OF GARDNER DENVER MACHINERY INC. IT IS NOT FOR PUBLIC DISCLOSURE. POSSESSION OF THE INFORMATION DOES NOT CONVEY ANY RIGHT TO LOAN, SELL OR DISCLOSE THE INFORMATION. UNAUTHORIZED REPRODUCTION OR USE OF THE INFORMATION IS PROHIBITED. THIS DOCUMENT IS TO BE RETURNED TO GARDNER DENVER MACHINERY INC. UPON COMPLETION OF THE PURPOSE FOR WHICH IT IS LOANED OR UPON REQUEST. FINISH OF CHAMFERS & FILLETS TO CONFORM TO ROUGHNESS ADJACENT AREA. SURFACE ROUGHNESS MAX PER ASA SPEC.

REV	DESCRIPTION	DATE	BY	CHK	REV	DESCRIPTION	DATE	BY	CHK
A	RELEASED (ECN 1008798)								
B	TAPPED HOLES WERE Ø5/8-11 FOOT WAS 3.50 (ECN 1009127)	01/10/01	MS	PM					

Gardner Denver Inc. Peachtree City, Georgia		FOR ALL CURRENT SPECIFICATIONS REFER TO BILL OF MATERIAL	
TOLERANCES: UNLESS OTHERWISE SPECIFIED DECIMAL .XX ± .02 NON-DECIMAL ± 1/16		SCALE 1 = 1	
ANGLES ± .1°		30T CBP 800	
SHEET 1 OF 1		FILE NO. 10 CAD/CAM	